

General Electric Company

Schenectady, N.Y.

SUPPLY DEPARTMENT

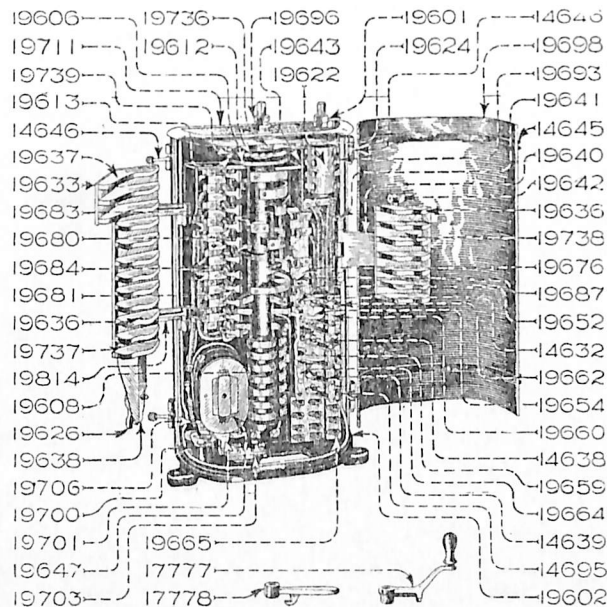
October, 1910

Copyright, 1910
by General Electric Company

Bulletin No. 4724A

PARTS OF BA AND BA-2 CONTROLLERS

Cat. No.	Description
.....	BA Controller (Series Parallel), complete, with limit switch. (Includes supporting bracket with cap screws and washers fastening controller to dasher, also wire guard and rubber gasket).



NOTE: The BA controller includes the limit switch and will always be furnished thus. Without the limit switch this controller is known as the BA-2.

The BA-2 has the same interchangeable parts as the BA controller with the exception of the limit switch. The operating handwheel is not used with the BA-2 controller.

17733	Screw for segments, per 100
17624	Pin for segments, per 100
19733	Rivet for segments, per 100
17777	*Operating handle
17778	*Reversing handle
51436	*Operating handwheel

Following are the interchangeable parts:

19602	FRAME, fitted with bearing caps for cylinder shafts and cap screws for same
13843	Cap screw fastening controlling shaft bearing caps to frame ($\frac{3}{8}$ "-16, 1" Hex. H. Slot.)
14428	Cap screw fastening reversing shaft bearing caps to frame ($\frac{5}{16}$ "-18, 1 $\frac{1}{8}$ " Hex. H. Slot.)
19711	Cap for controller
19712	Screw fastening cap to frame (14-24, $\frac{9}{16}$ " F. H. Brass)

*Not included in complete controller, must be ordered separately.

NOTE.—The prices and data in this publication are for the convenience of customers, and every effort is made to avoid error, but this Company does not guarantee their correctness, nor does it hold itself responsible for any errors or omissions in this publication. Both prices and data are subject to change without notice.

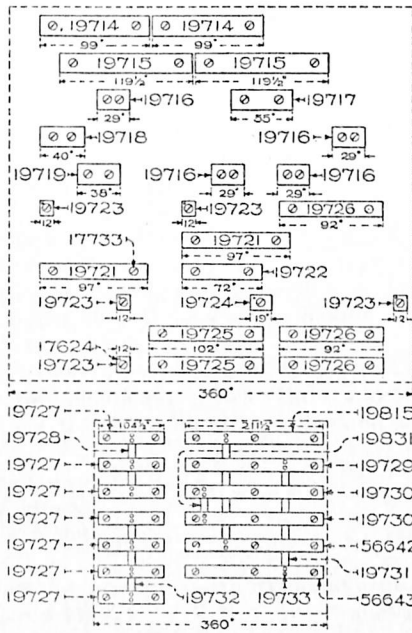
Second Edition.

Supersedes Supply Catalogue No. 7575.

GENERAL ELECTRIC COMPANY

4724A-2 Parts of BA and BA-2 Controllers

CONTROLLING CYLINDER SEGMENTS FOR BA, BA-2 AND BA-3 CONTROLLERS



CAT. NO.	LIST PRICE	CAT. NO.	LIST PRICE	CAT. NO.	LIST PRICE	CAT. NO.	LIST PRICE
19714	19721	19727	19815
19715	19722	19728	19831
19716	19723	19729	56642
19717	19724	19730	56643
19718	19725	19731
19719	19726	19732

Cat. No.	Description
19736	Thumbscrew, with washer, fastening cap to controlling shaft bearing cap ($\frac{5}{16}$ "-18, $\frac{7}{8}$ " Sp'l).
19696	WATER CAP AND POINTER for controlling shaft, with set screw
19601	Water cap for reversing shaft, with set screw
14410	Set screw for water caps ($\frac{5}{16}$ "-18, $\frac{3}{4}$ " Sp'l Blued)
19698	SHEET IRON COVER, complete
14645	Slotted lug with rivets for cover
14646	Hinge bolt with pin and nut for cover
19740	Fiber plate for base of controller
19741	Screw fastening No. 19740 to controller base (14-24, $\frac{1}{16}$ " F. H.), per 100
19638	HINGED POLE PIECE, left-hand side, complete, with hinge brackets
19639	Upper hinge bracket, with rivets and short hinge pin
19814	Lower hinge bracket, with rivets and long hinge pin
19626	Cap screw with wrench attached fastening pole piece to magnet core
19640	HINGED POLE PIECE, right-hand side, complete, with hinge pin and spring cotters for pin.
19641	Hinge pin
4030	Spring cotter for hinge pin ($\frac{3}{32}$ " x $\frac{5}{8}$ "), per 10000
19642	Thumbscrew, with washer, fastening No. 19640 in position ($\frac{5}{16}$ "-18, $1\frac{5}{8}$ " Sp'l)

Missing pages 3 and 4

GENERAL ELECTRIC COMPANY

4724A-6 Parts of BA and BA-2 Controllers

Cat. No.	Description
51538	Cap for top of controller.....

PARTS OF B-3 CONTROLLER

.....	B-3 Controller (Series Parallel), complete. (Includes supporting bracket with cap screws and washers fastening controller to dasher, also wire guard and rubber gasket).....
17777	*Operating handle.....
17778	*Reversing handle.....
51436	*Operating handwheel.....

NOTE: The B-3 controller does not include the limit switch.

Following are the interchangeable parts of the B-3 controller which differ from those of the BA:

19747	Cap for top of controller.....
19801	Cap screw with wrench attached fastening pole piece to magnet core.....
19742	ARC DEFLECTOR, complete, left-hand side.....
19743	ARC DEFLECTOR, complete, right-hand side.....
19744	Division plate, large, for No. 19742.....
19745	Division plate, medium, for No. 19742 and large plate for No. 19743.....
19746	Division plate, small, for Nos. 19742, 19743.....
19748	CONTROLLING CYLINDER, complete, with shaft, insulation disks, star wheel, demagnetizing attachment and safety cam washer.....
	Contact segments and screws are listed on page 17.
19749	STAR WHEEL, with pin, must be fitted.....
19800	Leatheroid partition, with wood base and fiber top and side shields.....
51533	LEFT-HAND CONTACT BOARD, complete, with unreinforced fingers.....
19792	RIGHT-HAND CONTACT BOARD, complete, with unreinforced fingers.....
51534	Wood base for No. 51533.....
51535	Wood base for No. 19792.....
51536	Fiber block between fingers.....
51537	Screw fastening No. 51536 to wood base (No. 8, 1 1/8" R.H. Blued), per 100.....
19793	Finger shield, for left-hand contact board, with asbestos lining.....
19794	Finger shield, for right-hand contact board, with asbestos lining.....
19795	CONNECTION BOARD and motor cutout, with (No. 6) insulated wires, complete.....
19796	Wood base.....
19797	Long switch handle.....

PARTS OF B-3-B CONTROLLER

.....	B-3-B Controller (Series Parallel), complete. (Includes supporting bracket with cap screws and washers fastening controller to dasher, also wire guard and rubber gasket).....
17777	*Operating handle.....
17778	*Reversing handle.....

NOTE: The B-3-B controller includes the limit switch and will always be furnished thus. Otherwise it is the same as the B-3 controller.

Following are the interchangeable parts of the B-3-B controller which differ from those of the B-3:

19699	LIMIT SWITCH, complete, with calibrating spring and screw, and stud for screw.....
19700	Magnet (with base).....
19701	Armature with hinge pin.....
19702	Hinge pin (1/4"x2 3/4" Brass).....
19703	Connection board, complete.....
19704	Carbon point.....
19705	Cable with tip connecting armature with left-hand contact board.....
19648	Terminal binding screw (14-24, 5/8" R.H. Blued Round Point), per 100.....

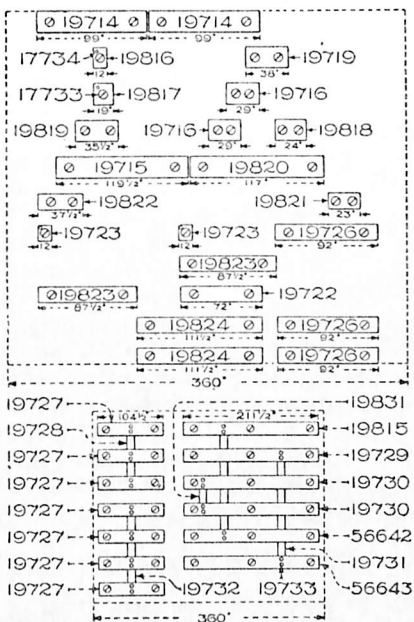
*Not included in complete controller, must be ordered separately.

GENERAL ELECTRIC COMPANY

Parts of BA and BA-2 Controllers 4724A-7

Cat. No.	Description
19706	Calibrating spring (30 turns .043" Steel wire).....
19707	Calibrating screw (6-32, 1 1/16" Sp'l).....
19708	Calibrating thumbnut (6-32 Brass Sp'l).....
19709	Brass supporting stud for No. 19708.....

CONTROLLING CYLINDER SEGMENTS FOR B-3, B-3-B AND B-5 CONTROLLERS



CAT NO.	LIST PRICE	CAT. NO.	LIST PRICE	CAT. NO.	LIST PRICE	CAT. NO.	LIST PRICE
19714	19727	19816	19823
19715	19728	19817	19824
19716	19729	19818	19831
19719	19730	19819	56642
19722	19731	19820	56643
19723	19732	19821
19726	19815	19822

17733	Screw for segments, per 100.....
17734	Pin for segments, per 100.....
19733	Rivet for segments, per 100.....

PARTS OF B-4 CONTROLLER

..... B-4 Controller (Series Parallel), complete. (Includes supporting bracket with cap screws and washers fastening controller to dasher, also wire guard and rubber gasket).....

17777	*Operating handle.....
17778	*Reversing handle.....
51436	*Operating handwheel.....

NOTE: The B-4 controller does not include limit switch.

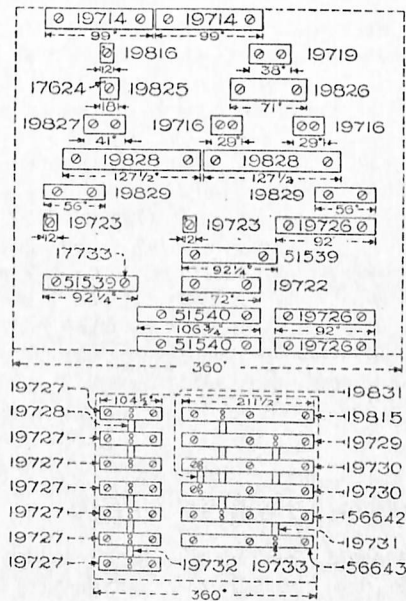
*Not included in complete controller, must be ordered separately.

GENERAL ELECTRIC COMPANY

4724A-8 Parts of BA and BA-2 Controllers

Cat. No.	Description
	<i>Following are the interchangeable parts of the B-4 controller which differ from those of the BA:</i>
19747	Cap for top of controller.
19742	ARC DEFLECTOR, complete, left-hand side.
19743	ARC DEFLECTOR, complete, right-hand side.
19744	Division plate, large, for No. 19742.
19745	Division plate, medium, for No. 19742, and large plate for No. 19743.
19746	Division plate, small, for Nos. 19742, 19743.
19798	MAGNET SPOOL, wound complete.
19799	CONTROLLING CYLINDER, complete, with shaft insulation, disks, star wheel, demagnetizing attachment and safety cam washer.
	Contact segments and screws are listed on page 19.
19749	STAR WHEEL, with pin, must be fitted.
19800	Leatheroid partition, with wood base and fiber top and side shields.
6068	Screw fastening side shield to top shield (10-24, 1/2" R.H. Blued), per 100.
19802	LEFT-HAND CONTACT BOARD, complete, with reinforced fingers.
19803	RIGHT-HAND CONTACT BOARD, complete, with reinforced fingers.
17665	Reinforced wide contact finger, with spring.
14418	Reinforced narrow contact finger with spring.
5889	Screw fastening wide finger to base (10-24, 7/16" R.H. Blued), per 100.
14434	Screw fastening narrow finger to base (8-32, 3/8" R.H. Blued), per 100.

CONTROLLING CYLINDER SEGMENTS FOR B-4 CONTROLLER



CAT. NO.	LIST PRICE	CAT. NO.	LIST PRICE	CAT. NO.	LIST PRICE	CAT. NO.	LIST PRICE
19714	19727	19816	19831
19716	19728	19825	51539
19719	19729	19826	51540
19722	19730	19827	56642
19723	19731	19828	56643
19726	19732	19829	19815

GENERAL ELECTRIC COMPANY

Parts of BA and BA-2 Controllers 4724A-9

Cat. No.	Description
17733	Screw for segments, per 100.....
17624	Pin for segments, per 100.....
19733	Rivet for segments, per 100.....
19805	Upper wide contact base for No. 19802.....
19806	Fiber block, with two screws for No. 19802.....
19807	Fiber block, with one screw, for No. 19802.....
1012	Screw fastening Nos. 19806, 19807 to No. 19802 (No. 8, 1 1/4" R.H.), per 100.....
19793	Finger shield for left-hand contact board, with asbestos lining.....
19794	Finger shield for right-hand contact board, with asbestos lining.....
19808	LOWER CONTACT BOARD, complete, with reinforced fingers.....
14415	Reinforced contact finger, with spring.....
14434	Screw fastening finger to base (8-32, 3/8" R.H. Blued), per 100.....
19809	REVERSING CONTACT BOARD, complete, with reinforced fingers.....
14415	Reinforced contact finger, with spring.....
14434	Screw fastening finger to base (8-32, 3/8" R.H. Blued), per 100.....
19810	CONNECTION BOARD and motor cutout, with (No. 4) insulated wires, complete.....
19811	Wood base.....
19797	Long switch handle.....

PARTS OF B-5 CONTROLLER

.....	B-5 Controller (Series Parallel), complete. (Includes supporting bracket with cap screws and washers fastening controller to dasher, also wire guard and rubber gasket).....
17777	*Operating handle.....
17778	*Reversing handle.....
51436	*Operating handwheel.....

Following are the interchangeable parts of the B-5 controller which differ from those of the B-3:

19798	Magnet spool, wound complete.....
51541	LEFT-HAND CONTACT BOARD, complete, with reinforced fingers.....
19812	RIGHT-HAND CONTACT BOARD, complete, with reinforced fingers.....
17665	Reinforced wide contact finger, with spring.....
14418	Reinforced narrow contact finger, with spring.....
19805	Upper wide contact base for No. 51541.....
5889	Screw fastening wide contact finger to base (10-24, 7/16" R.H. Blued), per 100.....
14434	Screw fastening narrow contact finger to base (8-32, 3/8" R.H. Blued), per 100.....
19808	LOWER CONTACT BOARD, complete, with reinforced fingers.....
14415	Reinforced contact finger, with spring.....
14434	Screw fastening finger to base (8-32, 3/8" R.H. Blued), per 100.....
19809	REVERSING CONTACT BOARD, complete, with reinforced fingers.....
14415	Reinforced contact finger with spring.....
14434	Screw fastening finger to base (8-32, 3/8" R.H. Blued), per 100.....
19813	CONNECTION BOARD and motor cutout, complete, with (No. 4) insulated wires.....
	This differs from connection board for B-3 controller Cat. No. 19795 in that No. 4 instead of No. 6 wire is used.

PARTS OF B-6 CONTROLLER

.....	B-6 Controller (Series Parallel), complete. (Includes supporting bracket with cap screws and washers for fastening controller to dasher, also wire guard and rubber gasket).....
17777	*Operating handle.....
17778	*Reversing handle.....
14431	*Special operating handle.....

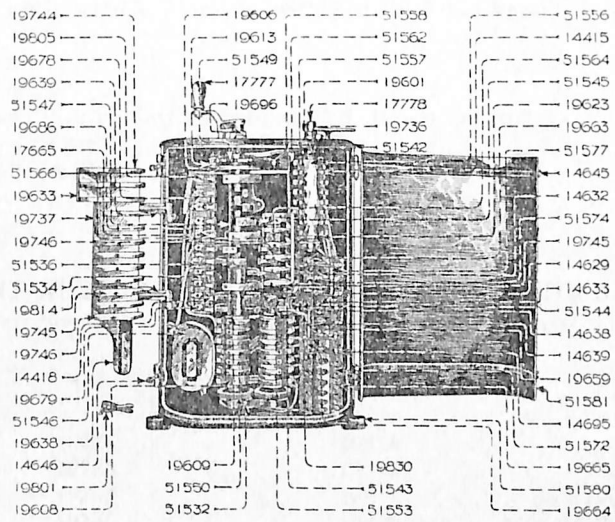
The B-6 controller does not include limit switch.

*Not included in complete controller, must be ordered separately.

GENERAL ELECTRIC COMPANY

4724A-10 Parts of BA and BA-2 Controllers

Cat. No.	Description
<i>The following are the interchangeable parts:</i>	
51580	Frame fitted with bearing caps for cylinder shaft and cap screws for same.....
51532	Cap screw fastening controlling shaft bearing caps to frame ($\frac{3}{8}$ "-16, $1\frac{3}{8}$ " Hex. H. Slot).....
10600	Cap screw fastening reversing shaft bearing caps and upper auxiliary shaft bearing cap to frame ($\frac{5}{16}$ "-18, $1\frac{3}{8}$ " Hex. H. Slot).....
51542	Cap for top of controller.....
19712	Screw fastening cap to frame (14-24, $\frac{9}{16}$ " F.H. Brass), per 100.....
19736	Thumbscrew with washer fastening cap to controlling and reversing shaft bearing caps ($\frac{5}{16}$ "-18, $\frac{7}{8}$ " Sp'l).....
19696	Water cap and pointer for controlling cylinder shaft, with set screw.....
19601	Water cap for reversing cylinder shaft, with set screw.....
14410	Set screw for water caps ($\frac{5}{16}$ "-18, $\frac{3}{12}$ " Sp'l Blued).....
51581	Sheet iron cover, complete.....
14645	Slotted lug for cover, with rivets.....
14646	Hinge bolt with pin and nut for cover.....
19740	Fiber plate for base of controller.....
19741	Screw fastening No. 19740 to base of controller (14-24, $\frac{7}{16}$ " F.H.), per 100.....
19638	Hinged pole piece, left-hand side, complete, with hinge brackets.....



19639	Upper hinge bracket, with rivets and short hinge pin.....
19814	Lower hinge bracket, with rivets and long hinge pin.....
19801	Cap screw with wrench attached fastening pole piece to magnet core.....
51543	Hinged pole piece, right-hand side, complete, with hinge pins.....
51544	Thumbscrew with washer, fastening No. 51543 to upper bearing cap for auxiliary cylinder ($\frac{5}{16}$ "-18, $1\frac{1}{4}$ " Sp'l).....
19742	ARC DEFLECTOR, complete, left-hand side.....
51582	ARC DEFLECTOR, complete, right-hand side.....
19628	Screw fastening arc deflector to pole piece (No. 10, $1\frac{1}{2}$ " R.H. Blued), per 100.....
19630	Short insulating bushing used with No. 19628.....
19629	Long insulating bushing used with No. 19628.....
19737	Insulating strip for No. 19742.....
51545	Insulating strip for No. 51582.....
19633	Square fiber plate for No. 19742.....

GENERAL ELECTRIC COMPANY

Parts of BA and BA-2 Controllers 4724A-11

Cat. No.	Description
19744	Division plate, large, for No. 19742.....
19745	Division plate, medium, for No. 19742, and large plate for No. 51582.....
19746	Division plate, small, for Nos. 19742, 51582.....
51546	MAGNET SPOOL, wound, complete.....
19648	Binding screw for magnet terminals (14-24, 5/8" R.H. Blued Round Point), per 100.....
22213	Check nut for No. 19648 (14-24 Hex. Flat Brass), per 100.....
51547	CONTROLLING CYLINDER, complete, with shaft, insulation disk, star wheel, demagnetizing attachment and gear..... Contact segments and screws are listed on page 25.
51548	Shaft.....
19605	Key for cylinder and shaft.....
19606	Insulation disk.....
19608	Wooden body for lower end of controlling cylinder and auxiliary cylinder.....
19609	Fiber ring, with pin, for body.....
51549	STAR WHEEL, with pin, must be fitted.....
51550	Gear, with pin, for controlling and auxiliary cylinders (45 Teeth, 10 Pitch).....
51551	AUXILIARY CYLINDER, complete, with gear.....
51552	Shaft.....
51553	Brass collar, with pin, for upper end of shaft.....
19613	Check pawl with roller for No. 51549.....
19739	Roller, with pin, for No. 19613.....
19615	Pin for roller.....
19616	Pivot pin for No. 19613.....
10365	Washer for No. 19616 (7/16"x7/8"x.125"), per 100.....
16118	Spring cotter for No. 19616 (1/8"x3/4"), per 1000.....
13632	Spring for No. 19613 (26 turns .091" Steel wire).....
19619	Pin for spring.....
51554	REVERSING CYLINDER, complete, with shaft and star wheel.....
51555	Shaft.....
51556	Wood body.....
19623	Fiber disk.....
10377	Screw fastening disk to body (No. 10, 1" F.H. Brass), per 100.....
51462	Brass collar, with pin.....
51557	STAR WHEEL, with pin, must be fitted.....
14692	Short contact.....
14693	Long contact.....

CONTROLLING AND AUXILIARY CYLINDER SEGMENTS FOR B-6 CONTROLLER

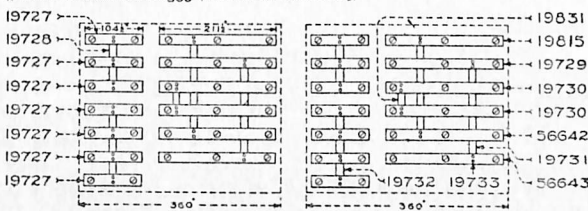
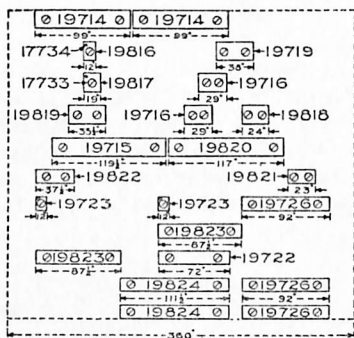
CAT. NO.	LIST PRICE	CAT. NO.	LIST PRICE	CAT. NO.	LIST PRICE	CAT. NO.	LIST PRICE
19714	19727	19815	19822
19715	19728	19816	19823
19716	19729	19817	19824
19719	19730	19818	19831
19722	19731	19819	56642
19723	19732	19820	56643
19726	19821

17733	Screw for segments, per 100.....
17734	Pin for segments, per 100.....
19733	Rivet for segments, per 100.....
19625	Screw fastening contacts to body (No. 8, 1/2" R.H. Brass), per 100.....
51558	Pawl for star wheel for reversing cylinder.....

GENERAL ELECTRIC COMPANY

4724A-12 Parts of BA and BA-2 Controllers

Cat. No.	Description
51559	Pivot pin for 51558.
16118	Spring cotter for No. 51559 ($\frac{1}{8}$ "x $\frac{3}{4}$ "), per 1000.
51562	Leatheroid partition with fiber top and side shields and supporting blocks.
6081	Screw fastening parts of partition together (10-24, $\frac{3}{8}$ " R.H. Blued), per 100.
1516	Screw fastening supporting blocks to frame (10-24, 1" R.H.), per 100.
14413	Washer for No. 1516 ($\frac{3}{2}$ "x $\frac{1}{2}$ "x.052" Copper), per 100.
882	Screw fastening top shield to left-hand contact board (No. 8, 1" F.H.), per 100.
51541	LEFT-HAND CONTACT BOARD, complete, with reinforced fingers.
51563	RIGHT-HAND CONTACT BOARD, complete, with reinforced fingers.
51534	Wood base for No. 51541.
51564	Wood base for No. 51563.
51560	Insulation strip under No. 51534.
51565	Insulation strip under No. 51564.
17665	Reinforced wide contact finger, with spring.



14418	Reinforced narrow contact finger, with spring.
14427	Contact spring, with rivets, for No. 17665.
19767	Contact spring, with rivets, for No. 14418.
5889	Screw fastening wide finger to base (10-24, $\frac{7}{16}$ " R.H. Blued), per 100.
19683	Brass washer plate for No. 5889, per 100.
14434	Screw fastening narrow finger to base (8-32, $\frac{3}{8}$ " R.H. Blued), per 100.
19684	Brass washer plate for No. 14434, per 100.
19685	Adjusting screw for contact fingers (14-24, $\frac{7}{8}$ " R.H. Blued), per 100.
22213	Check nut for adjusting screw (14-24 Hex. Flat Brass), per 100.
19805	Upper wide contact base.
19678	Wide contact base.
19679	Narrow contact base.
13852	Screw fastening base to wood base (No. 10, $\frac{7}{8}$ " F.H.), per 100.
19669	Screw fastening contact boards in position (14-24, 1 $\frac{1}{4}$ " R.H.), per 100.
14426	Washer for No. 19669 ($\frac{7}{4}$ "x $\frac{1}{2}$ "x $\frac{1}{16}$ ") thick brass, per 100 fiber block between fingers.
51536	Fiber block between fingers.
51537	Screw fastening No. 51536 to wood base (No. 8, 1 $\frac{1}{8}$ " R.H. Blued), per 100.
19686	Finger shield for left-hand contact board, with asbestos lining.
51566	Finger for right-hand contact board, with asbestos lining.
13848	Screw fastening Nos. 19686, 51566 to contact board (No. 10, $\frac{3}{4}$ " F.H.), per 100.
51567	LOWER CONTACT BOARD, complete with reinforced fingers.

GENERAL ELECTRIC COMPANY

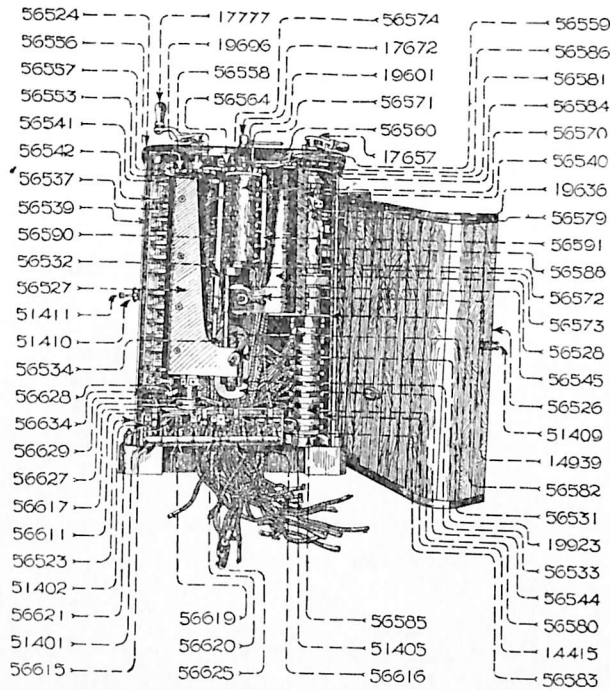
Parts of BA and BA-2 Controllers 4724A-13

Cat. No.	Description
51568	Wood base.....
14415	Reinforced contact finger, with spring.....
14429	Contact spring, with rivets, for No. 14115.....
14434	Screw fastening finger to base (8-32, $\frac{3}{8}$ " R.H. Blued), per 100.....
13804	Brass washer plate for No. 14434.....
19692	Base for contact finger.....
14192	Screw fastening base to wood base (No. 8, $\frac{5}{8}$ " F.H.), per 100.....
19691	Screw fastening contact board to frame (14-24, $1\frac{1}{8}$ " R.H.), per 100.....
14426	Washer for No. 19691 ($\frac{17}{64}$ "x $\frac{1}{2}$ "x $\frac{1}{16}$ " thick Brass), per 100.....
51569	REVERSING CONTACT BOARD, complete, with reinforced fingers.....
51570	Wood base.....
14415	Reinforced contact finger, with spring.....
14429	Contact spring, with rivets, for No. 14415.....
14434	Screw fastening finger to base (8-32, $\frac{3}{8}$ " R.H. Blued), per 100.....
13804	Brass washer plate for No. 14434.....
19697	Base for contact finger.....
14192	Screw fastening base to wood base (No. 8, $\frac{5}{8}$ " F.H.), per 100.....
19646	Screw fastening contact board to frame (14-24, 1" R.H.), per 100.....
14426	Washer for No. 19646 ($\frac{17}{64}$ "x $\frac{1}{2}$ "x $\frac{1}{16}$ " thick Brass), per 100.....
51571	CONNECTION BOARD AND MOTOR CUTOUT, complete.....
51572	Wood base.....
51573	Fiber spacing block back of connection board.....
51574	Stop piece for safety latch.....
51575	Spring for safety latch.....
19672	Screw fastening Nos. 51574, 51575 to wood base (No. 8, $\frac{5}{8}$ " R.H. Blued), per 100.....
19648	Binding screw for terminals (14-24, $\frac{5}{8}$ " R.H. Blued Round Point), per 100.....
22213	Check nut for No. 19648 (14-24 Hex. Flat Brass), per 100.....
51576	Screw fastening connection board to frame (14-24, $2\frac{1}{2}$ " R.H.), per 100.....
14426	Washer for No. 51576 ($\frac{17}{64}$ "x $\frac{1}{2}$ "x $\frac{1}{16}$ " thick Brass), per 100.....
14638	Outer switch blade.....
14639	Inner switch blade.....
19659	Long switch handle.....
51577	Short switch handle.....
14629	Switch contact, without binding post.....
14695	Switch contact and binding post, complete.....
19664	Switch contact, left-hand, for long switch handle.....
19663	Switch contact, left-hand, for short switch handle.....
14632	Fulcrum pillar, with pivot, for one wire connection.....
14633	Fulcrum pillar, with pivot, for two wire connection.....
19665	Binding post, complete.....
1013	Screw fastening No. 19665 to board (No. 8, $\frac{3}{4}$ " F.H.), per 100.....
13848	Screw fastening fulcrum pillars an switch contacts to board (No. 10, $\frac{3}{4}$ " F.H.), per 100.....
19830	Safety latch.....
51578	Pin for latch ($\frac{3}{8}$ "x $2\frac{1}{2}$ " Sp'l).....
4030	Spring cotter for No. 51578 ($\frac{3}{32}$ "x $\frac{5}{8}$ "), per 100.....
51579	Bushing for safety latch (Sp'l).....
14647	WIRE GUARD.....
17085	RUBBER GASKET.....
14963	Bracket fastening controller to dasher.....
439	Cap screw fastening bracket to controller ($\frac{1}{2}$ " -13, 1" Hex. H.).....
13850	Washer for No. 439 ($\frac{9}{16}$ "x $1\frac{1}{2}$ "x.025"), per 100.....
17789	Dowel for feet of controller, with nut.....
16325	Nut for No. 17789 ($\frac{1}{2}$ "-13 Hex. Rough), per 100.....

GENERAL ELECTRIC COMPANY

4724A-14 Parts of BA and BA-2 Controllers

PARTS OF B-8 CONTROLLER



Cat. No.	Description
.....	B-8 Controller (Series Parallel), complete. (Includes dust guard).....
17777	*Operating handle.....
17672	*Reversing handle.....
17657	*Brake handle.....

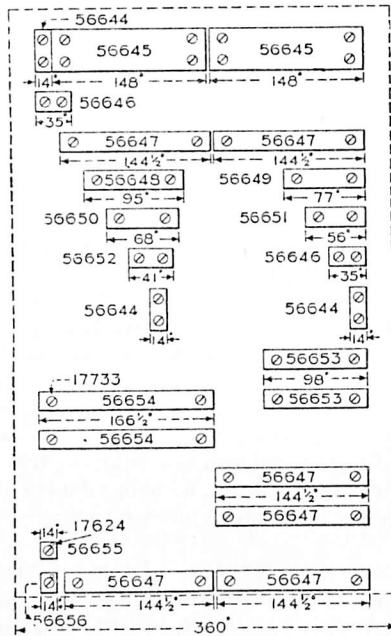
CONTROLLING CYLINDER SEGMENTS FOR B-8 CONTROLLER

17733	Screw for segments, per 100.....
17624	Pin for segments, per 100.....
<i>The following are the interchangeable parts:</i>	
56523	FRAME, complete, includes magnet core and dowel pins for cap.....
51410	Hinge joint for frame, with screws.....
9877	Screw fastening joint to frame ($\frac{5}{16}$ "-18, 1" R.H.), per 100.....
51411	Hinge bolt with pin and nut.....
56524	Cap for controller.....
56525	Cap screw fastening cap to frame ($\frac{1}{2}$ "-13, 1 $\frac{1}{2}$ " Hex. H. Iron Nicked).....
19696	WATER CAP AND POINTER, for controlling and brake cylinder shafts, with set screw.....
19601	Water cap for reversing shaft with set screw.....
14410	Set screw for water caps ($\frac{5}{16}$ "-18, $\frac{3}{32}$ " Sp'l Blued), per 100.....
56526	Wooden cover, with slotted lugs.....
51409	Slotted lug, with rivets.....
56527	Hinged pole piece for controlling cylinder.....
56528	Hinged pole piece for brake cylinder.....
56529	Hinge pin for No. 56527 ($\frac{3}{8}$ "x6 $\frac{5}{8}$ ").....
56530	Hinge pin for No. 56528 ($\frac{5}{8}$ "x11" Sp'l).....
56531	Large spacing tube for No. 56530.....
56532	Small spacing tube for No. 56530.....

*Not included in complete controller, must be ordered separately.

GENERAL ELECTRIC COMPANY

Parts of BA and BA-2 Controllers 4724A-15



CAT. NO.	LIST PRICE	CAT. NO.	LIST PRICE
56644	56651
56645	56652
56646	56653
56647	56654
56648	56655
56649	56656
56650

Cat. No.	Description
56533	Single hinge joint for pole piece.....
56534	Double hinge joint for pole piece.....
9887	Cap screw fastening hinge joints to magnet core (1/2"-13, 1 1/2" Hex. H.).....
19923	Cap screw with wrench attached, fastening pole piece for controlling cylinder to magnet core.....
14939	Cap screw with wrench attached, fastening pole piece for brake cylinder to magnet core.....
56535	ARC DEFLECTOR, complete, for controlling cylinder.....
56536	ARC DEFLECTOR, complete, for brake cylinder.....
19628	Screw fastening arc deflector to pole piece (No. 10, 1 1/2" R.H. Blued), per 100.....
19630	Insulating bushing used with No. 19628.....
56537	Wide strip for No. 56535.....
56538	Wide strip for No. 56536.....
56539	Narrow strip for No. 56535.....
56540	Narrow strip for No. 56536.....
56541	Upper end plate for No. 56535.....
56542	Division plate for No. 56535.....
19636	Division plate for No. 56536.....

GENERAL ELECTRIC COMPANY

4724A-16 Parts of BA and BA-2 Controllers

Cat. No.	Description
882	Screw fastening division plates in position (No. 8, 1" F.H.), per 100.
56544	MAIN MAGNET SPOOL, wound complete, with terminals.
56545	BRAKE MAGNET SPOOL, wound, complete, with terminals.
5250	Binding screw for No. 56544 ($\frac{5}{16}$ "-18, $\frac{3}{4}$ " Hex. H. cap. screw).
19648	Binding screw for No. 56545 (14-24, $\frac{5}{8}$ " R.H. Round Point Blued), per 100.
22213	Binding nut for No. 19648 (14-24, $\frac{1}{8}$ " thick Hex. Flat Brass), per 100.
56546	CONTROLLING CYLINDER, complete, with shaft, insulation disk and star wheel. Contact segments and screws are listed on page 30.
56547	Shaft.
56548	Long key for shaft.
56549	Short key for shaft.
56550	Key for lower cylinder pipe and bushings ($4\frac{1}{2}$ "x $\frac{3}{8}$ "x $\frac{1}{4}$ ").
56551	Key for middle cylinder pipe and bushings ($4\frac{1}{4}$ "x $\frac{3}{8}$ "x $\frac{1}{4}$ ").
56552	Key for upper cylinder pipe and bushings ($1\frac{1}{4}$ "x $\frac{3}{8}$ "x $\frac{1}{4}$ ").
56553	Insulation disk.
56554	Casting for lower end of cylinder.
56555	Threaded collar, with pin, for lower end of cylinder.
56556	Star wheel, with pin, must be fitted.
56557	Check pawl, with roller, for controlling cylinder.
56558	Check pawl for reversing cylinder.
56559	Check pawl, with roller, for brake cylinder.
56560	Interlocking arm, with pin.
14925	Roller, with pin, for No. 56557.
19739	Roller, with pin, for No. 56559.
19615	Pin for Nos. 56560, 14925, 19739 ($\frac{5}{16}$ "x $1\frac{7}{32}$ ").
56561	Pivot pin for No. 56557, per 100.
56562	Pivot pin for No. 56558.
56563	Pivot pin for No. 56559, per 100.
10365	Washer for pivot pins ($\frac{1}{16}$ "x $\frac{1}{8}$ "x.125"), per 100.
16118	Spring cotter for Nos. 10365 ($\frac{1}{8}$ "x $\frac{3}{4}$ "), per 1000.
56564	Spring for pawls (23 turns .091" Steel wire).
56565	Pin for spring for No. 56557, fastening to frame.
56566	Pin for spring fastening to No. 56558.
56567	Pin for spring for Nos. 56558, 56559, fastening to cap plate.
56568	REVERSING CYLINDER, complete, with shaft, insulation disks, collar and star wheel.
56569	Shaft.
56570	Wood body.
56571	Insulation disk (upper).
56572	Insulation disk (lower).
56573	Collar with pin.
9712	Screw fastening collar to wood body (No. 10, $1\frac{1}{4}$ " F.H.), per 100.
56574	Star wheel, with pin, must be fitted.
56575	Short contact.
56576	Long contact.
9650	Screw fastening contacts to wood body (No. 10, $\frac{3}{4}$ " F.H. Brass), per 100.
56577	BRAKE CYLINDER, complete, with shaft, insulation disks, collars and star wheel.
56578	Shaft.
56579	Wood body (upper).
56580	Wood body (lower).
56581	Insulation disk (upper).
56582	Insulation disk (middle).
56583	Insulation disk (lower).
56584	Brass collar (upper).
56585	Steel collar with pin (lower).
56586	Star wheel, with pin, must be fitted.

GENERAL ELECTRIC COMPANY

Parts of BA and BA-2 Controllers 4724A-17

Cat. No.	Description
56587	Casting for contact segments (upper)
56588	Casting for contact segments (middle)
56589	Casting for contact segments (lower)
469	Screw fastening castings to wood body (No. 10, $\frac{7}{8}$ " F.H. Brass), per 100
56590	Fiber partition between controlling and reversing cylinders
56591	Fiber partition between reversing and brake cylinders
56613	Spacing sleeve for partitions
56592	Screw fastening partitions to frame (14-24, 6" R.H.)
56593	CONTROLLING CONTACT BOARD, complete, with reinforced fingers
56594	Wood base
17665	Wide contact finger, with spring
14418	Narrow contact finger, with spring
14427	Contact spring with rivets for No. 17665
19767	Contact spring with rivets for No. 14418
5889	Screw fastening wide finger to base (10-24, $\frac{7}{16}$ " R.H. Blued), per 100
14434	Screw fastening narrow finger to base (8-32, $\frac{3}{8}$ " R.H. Blued), per 100
19683	Brass washer plate for No. 5889, per 100
19684	Brass washer plate for No. 14434, per 100
19685	Adjusting screw for contact fingers (14-24, $\frac{7}{8}$ " R.H. Blued), per 100
22213	Check nut for adjusting screw (14-24, Hex. Flat Brass) per 100
56599	Double connector, complete, for contact fingers
56595	Double contact base
56596	Single wide contact base, with $\frac{3}{2}$ " hole for cable
56597	Single wide contact base, with $\frac{17}{4}$ " hole for cable
56598	Single narrow contact base
13852	Screw fastening base to wood base (No. 10, $\frac{7}{8}$ " F.H.), per 100
56600	Cap screw fastening contact board to frame ($\frac{5}{16}$ "-18, $3\frac{1}{8}$ " Hex. H. Slot)
13540	Washer for No. 56600 ($\frac{11}{32}$ "x $\frac{3}{4}$ "x.062" Brass), per 100
56601	REVERSING CONTACT BOARD, complete, with reinforced fingers
56602	Wood base
14415	Contact finger, with spring
14429	Contact spring with rivet for No. 14415
14434	Screw fastening finger to base (8-32, $\frac{3}{8}$ " R.H. Blued), per 100
13804	Brass washer plate for No. 14434
19697	Contact base for No. 14415
14192	Screw fastening base to wood base (No. 8, $\frac{5}{8}$ " F.H.), per 100
56603	Screw fastening wood base to frame ($\frac{5}{16}$ "-18, $2\frac{3}{8}$ " R.H.)
51647	Washer for No. 56603 ($\frac{11}{32}$ "x $\frac{5}{8}$ "x.062"), per 100
56604	BRAKE CONTACT BOARD (upper) with reinforced fingers
56605	BRAKE CONTACT BOARD (lower) with reinforced fingers
56606	Wood base for No. 56604
56607	Wood base for No. 56605
17665	Wide contact finger, with spring for No. 56604
14418	Narrow contact finger, with spring for No. 56604
14415	Contact finger with spring for No. 56605
14427	Contact spring with rivets for No. 17665
19767	Contact spring with rivets for No. 14418
14429	Contact spring with rivets for No. 14415
5889	Screw fastening No. 17665 to base (10-24, $\frac{7}{16}$ " R.H. Blued), per 100
14434	Screw fastening Nos. 14418, 14415, to base (8-32, $\frac{3}{8}$ " R.H. Blued), per 100
19683	Brass washer plate for No. 5889, per 100
19684	Brass washer plate for screw for No. 14418, per 100
13804	Brass washer plate for screw for No. 14415
19685	Adjusting screw for Nos. 17665, 14418 (14-24, $\frac{7}{8}$ " R.H. Blued), per 100
22213	Check nut for No. 19685 (14-24 Hex. Flat Brass), per 100
19678	Contact base for No. 17665

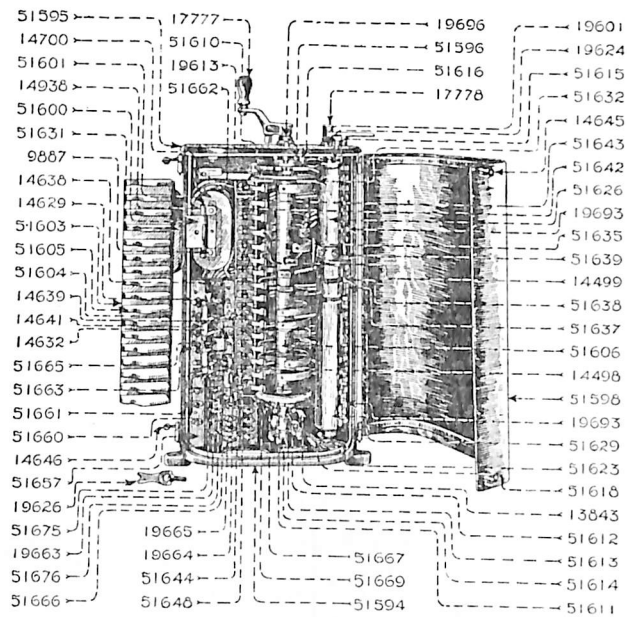
GENERAL ELECTRIC COMPANY

4724A-18 Parts of BA and BA-2 Controllers

Cat. No.	Description
19679	Contact base for No. 14418.....
19697	Contact base for No. 14415.....
13852	Screw fastening Nos. 19678, 19679 to wood base (No. 10, $\frac{7}{8}$ " F.H.), per 100.....
14192	Screw fastening No. 19697 to wood base (No. 8, $\frac{5}{8}$ " F.H.), per 100.....
56608	Finger shield for No. 56604.....
14192	Screw fastening shield to wood base (No. 8, $\frac{5}{8}$ " F.H.), per 100.....
56609	Screw fastening No. 56604 to frame ($\frac{5}{16}$ "-18, $3\frac{1}{8}$ " R.H.).....
56603	Screw fastening No. 56605 to frame ($\frac{5}{16}$ "-18, $2\frac{3}{8}$ " R.H.).....
51647	Washer for Nos. 56609, 56603 ($\frac{11}{32}$ "x $\frac{5}{8}$ "x.062"), per 100.....
56610	CUTOUT SWITCH BOX, complete, with insulated wires.....
56611	Wood box, with fiber end plates.....
1188	Screw fastening fiber end plates to box (No. 10, 1" F.H.), per 100.....
1423	Screw fastening parts of box together (No. 12, 2" F.H.), per 100.....
56592	Screw fastening box to frame (14-24, 6" R.H.).....
14426	Washer for No. 56592 ($\frac{7}{16}$ "x $\frac{1}{2}$ "x.062" Brass), per 100.....
56612	Spacing sleeve for box ($\frac{1}{4}$ "x1"x1 $\frac{3}{4}$ " long, Fiber).....
56613	Spacing sleeve for box ($\frac{1}{4}$ "x1"x2" long, Fiber).....
56614	Spacing sleeve for box ($\frac{1}{4}$ "x1"x2 $\frac{1}{4}$ " long, Fiber).....
56615	Long switch handle.....
56616	Short switch handle.....
56617	Spring for switch handle.....
56618	Screw fastening spring to box (No. 10, $\frac{5}{8}$ " R.H. Blued), per 100.....
51401	Outer switch blade.....
56619	Inner switch blade.....
56620	Switch blade with spacing plate.....
51403	Pin fastening switch blade to fulcrum pillar ($\frac{1}{4}$ "x $\frac{5}{8}$ " Fill. H. Brass).....
51404	Spring washer for pin ($\frac{1}{4}$ "x $\frac{7}{8}$ "x.031" Phos. Bronze), per 100.....
4030	Spring cotter for pin ($\frac{3}{32}$ "x $\frac{5}{8}$ "), per 1000.....
51402	Fulcrum pillar for switch blade.....
56618	Screw fastening No. 51402 to box (No. 10, $\frac{5}{8}$ " R.H. Blued), per 100.....
51405	Single switch contact, complete, left-hand.....
51406	Single switch contact, complete, right-hand.....
56621	Double switch contact, complete.....
56622	Single contact jaw, left-hand.....
56623	Single contact jaw, right-hand.....
56624	Double contact jaw.....
56618	Screw fastening switch contacts to box (No. 10, $\frac{5}{8}$ " R.H. Blued), per 100.....
56625	Series stop cam, complete.....
56626	Guide plate for No. 56625, per 100.....
56627	Guide strap for No. 56625, per 100.....
56618	Screw fastening Nos. 56626, 56627 to wood box (No. 10, $\frac{5}{8}$ " R.H. Blued), per 100.....
56628	Series stop arm.....
56629	Series stop lever.....
56630	Hinge pin for arm ($\frac{1}{2}$ "x3 $\frac{1}{2}$ ").....
56631	Pivot pin for lever.....
21392	Washer for pivot pin ($\frac{11}{32}$ "x $\frac{3}{4}$ "x.063"), per 100.....
16118	Spring cotter for No. 56630 ($\frac{1}{8}$ "x $\frac{3}{4}$ "), per 100.....
4030	Spring cotter for No. 56631 ($\frac{3}{32}$ "x $\frac{5}{8}$ "), per 100.....
56632	Link for arm.....
22213	Check nut for link (14-24, Hex. Flat Brass), per 100.....
56633	Washer for link ($\frac{5}{32}$ "x $\frac{7}{16}$ "x.062"), per 100.....
4030	Spring cotter for link ($\frac{3}{32}$ "x $\frac{5}{8}$ "), per 100.....
56634	Tension spring for arm (40 turns .048" Steel wire), per 100.....
56710	Two-way connector for cables, with two screws ($\frac{1}{4}$ " hole for cable).....
56711	Two-way connector for cables, with two screws ($\frac{1}{4}$ " hole for cable, solder end, $\frac{9}{16}$ " hole screw end).....

GENERAL ELECTRIC COMPANY

Parts of BA and BA-2 Controllers 4724A-21



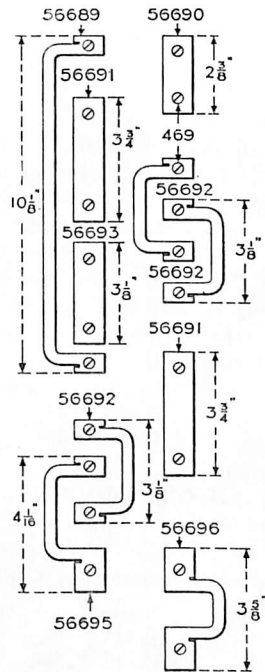
Cat. No.	Description
19696	WATER CAP AND POINTER for controlling cylinder shaft, with set screw
19601	WATER CAP for reversing cylinder shaft, with set screw
14410	Set screw for water caps ($\frac{5}{16}$ "-18, $\frac{3}{32}$ " Sp'l Blued), per 100
51598	SHEET IRON COVER, complete
14645	Slotted lug for cover, with rivets
14646	Hinge bolt with pin and nut for cover
51599	Fiber plate for base of controller
19741	Screw fastening No. 51599 to base of controller (14-24, $\frac{1}{16}$ " F.H.), per 100
51600	HINGED POLE PIECE
51601	Hinge pin for pole piece ($\frac{3}{8}$ "x6 $\frac{1}{4}$ " Sp'l)
14938	Hinge joint for pole piece
9887	Cap screw fastening hinge joint to magnet core ($\frac{1}{2}$ "-13, 1 $\frac{1}{2}$ " Hex. H.)
19626	Cap screw, with wrench attached, fastening pole piece to magnet core
51602	ARC DEFLECTOR, complete, with shield for pole piece
51631	Leatheroid shield for pole piece
51603	Wide strip for arc deflector
51604	Narrow strip for arc deflector
51605	Division plate for arc deflector
19628	Screw fastening arc deflector to pole piece (No. 10, 1 $\frac{1}{2}$ " R.H. Blued), per 100
19630	Insulating bushing used with No. 19628
19929	Screw fastening parts of arc deflector together (No. 8, $\frac{7}{8}$ " F.H.), per 100

CAT. NO.	LIST PRICE	CAT. NO.	LIST PRICE
56689	56693
56690	56695
56691	56696
56692

GENERAL ELECTRIC COMPANY

4724A-22 Parts of BA and BA-2 Controllers

Cat. No.	Description
14700	MAGNET SPOOL, wound, complete.....
51606	CONTROLLING CYLINDER, complete, with shaft, insulation disks, star wheel, series stop stop and cams.....
Contact segments and screws are listed on page 64.	
51607	Shaft.....
51608	Long key for shaft ($\frac{1}{4}$ "x $\frac{1}{4}$ "x $28\frac{3}{4}$ ".....
51609	Short key for shaft ($\frac{1}{4}$ "x $\frac{1}{4}$ "x $2\frac{3}{8}$ ".....



51610	Insulation disk, upper.....
51611	Insulation disk, lower.....
51612	Series stop, with pin.....
51613	Upper cam, with pin.....
51614	Lower cam, with pin.....
51615	STAR WHEEL, with pin, must be fitted.....
19613	Check pawl, with roller, for No. 51615.....
51616	Check pawl for star wheel for reversing cylinder.....
19739	Roller, with pin, for No. 19613.....
19615	Pin for roller ($\frac{3}{16}$ "x $1\frac{7}{32}$ ".....
51617	Pivot pin for No. 19613.....
19617	Pivot pin for No. 51616.....
10365	Washer for Nos. 51617, 19617 ($\frac{1}{16}$ "x $\frac{7}{8}$ "x.125"), per 100.....
16118	Spring cotter for Nos. 51617, 19617 ($\frac{1}{8}$ "x $\frac{3}{4}$ "....., per 1000.....
13632	Spring for No. 19613 (26 turns .091" Steel wire).....
51461	Spring for No. 51616 (24 turns .091" Steel wire).....
19619	Pin for No. 13632.....
19618	Pin for No. 51461.....
51618	Cam lever, with rollers and crank pin.....
51619	Roller, with pin, for No. 51618.....
51620	Pin for No. 51619 ($\frac{3}{8}$ "x $1\frac{3}{8}$ ".....

GENERAL ELECTRIC COMPANY

Parts of BA and BA-2 Controllers 4724A-23

Cat. No.	Description
51621	Crank pin for No. 51618 ($\frac{7}{16}$ "x $1\frac{9}{16}$ " Sp'l).....
51622	Pivot pin for No. 51618 ($\frac{11}{16}$ "x $5\frac{13}{16}$ " Sp'l).....
16064	Spring cotter for No. 51621 ($\frac{3}{16}$ "x $1\frac{1}{4}$ "), per 1000.....
51623	Crank for No. 51618.....
9704	Spring cotter for No. 51622 ($\frac{3}{16}$ "x $1\frac{3}{4}$ "), per 1000.....
51624	REVERSING CYLINDER, complete, with shaft and star wheel.....
51625	Shaft.....
51626	Wood body.....
14691	Brass collar, with pin.....
19624	STAR WHEEL, with pin, must be fitted.....
14692	Short contact.....
14693	Long contact.....
19625	Screw fastening contacts to body (No. 8, $\frac{1}{2}$ " R.H. Brass), per 100.....
51627	COMMUTATING CYLINDER, complete.....
Contact segments and screws are listed on page 42.	
51628	Shaft.....
51629	Wood body.....
51630	Brass collar, with pin.....
9712	Screw fastening collar to body (No. 10, $1\frac{1}{4}$ " F.H.), per 100.....
51632	Insulation shield for controlling cylinder, complete, with fiber supporting blocks.....
16282	Screw fastening shield to supporting blocks, (No. 10, $\frac{5}{8}$ " F.H.), per 100.....
51633	Screw fastening supporting blocks to frame (14-24, $\frac{3}{4}$ " R.H.), per 100.....
14426	Washer for No. 51633 ($\frac{17}{64}$ "x $\frac{1}{2}$ "x $\frac{1}{16}$ " thick Brass), per 100.....
9712	Screw fastening shield to controlling contact board (No. 10, $1\frac{1}{4}$ " F.H.), per 100.....
51662	Insulation shield for controlling contact board.....
51634	Screw fastening shield to board (No. 10, $\frac{7}{16}$ " R.H. Blued), per 100.....
51635	Shield with bracket for reversing and commutating cylinder bearing.....
697	Screw fastening bracket to bearing (10-24, $\frac{1}{4}$ " R.H. Blued), per 100.....
51636	ARC DEFLECTOR, complete, for double fingers for commutating contact board.....
51637	Deflector back.....
51638	Division plate, small.....
51639	Division plate, large.....
1288	Screw fastening back to division plates (10-24, $\frac{3}{8}$ " F.H.), per 100.....
51640	Screw fastening back to division plates and deflector to contact board (No. 10, $1\frac{3}{4}$ " F.H.), per 100.....
51641	CONTROLLING CONTACT BOARD, complete, with unreinforced fingers.....
51642	Wood base.....
14499	Wide contact finger, with spring.....
14498	Narrow contact finger, with spring.....
14427	Contact spring, with rivets, for No. 14499.....
19767	Contact spring, with rivets, for No. 14498.....
6081	Screw fastening wide finger to base (10-24, $\frac{3}{8}$ " R.H. Blued), per 100.....
19683	Brass washer plate for No. 6081, per 100.....
5883	Screw fastening narrow finger to base (8-32, $\frac{5}{16}$ " R.H. Blued), per 100.....
19684	Brass washer plate for No. 5883, per 100.....
19685	Adjusting screw for contact fingers (14-24, $\frac{7}{8}$ " R.H. Blued), per 100.....
22213	Check nut for adjusting screw (14-24 Hex. Flat Brass), per 100.....
51643	Wide contact base.....
51644	Narrow contact base.....
51645	Screw fastening base to wood base (No. 9, $\frac{7}{8}$ " F.H.), per 100.....
51646	Screw fastening contact board to frame ($\frac{5}{16}$ "-18, $2\frac{1}{8}$ " R.H.), per 100.....
51647	Washer for No. 51646 ($\frac{13}{32}$ "x $5\frac{5}{8}$ "x.062"), per 100.....
51648	Finger shield, with supporting blocks and shield for cylinder.....
13846	Screw fastening No. 51648 to contact board (No. 10, $1\frac{1}{8}$ " R.H. Blued), per 100.....
9711	Washer for No. 13846 ($\frac{3}{16}$ "x $\frac{3}{8}$ "x $\frac{1}{16}$ " thick Copper), per 100.....
51649	REVERSING CONTACT BOARD, complete, with unreinforced fingers.....

GENERAL ELECTRIC COMPANY

4724A-24 Parts of BA and BA-2 Controllers

Cat. No.	Description
51650	Wood base.....
19693	Contact finger, with spring.....
14429	Contact spring, with rivets, for No. 19693.....
5883	Screw fastening finger to base (8-32, $\frac{5}{16}$ " R.H. Blued), per 100.....
13804	Brass washer plate for No. 5883.....
51651	Base for contact finger.....
14192	Screw fastening base to wood base (No. 8, $\frac{5}{8}$ " F.H.), per 100.....
51652	Screw fastening No. 51649 to frame (14-24, $1\frac{3}{4}$ " R.H.).....
14426	Washer for No. 51652 ($\frac{1}{8}$ "x $\frac{1}{2}$ "x $\frac{1}{16}$ " thick brass), per 100.....
51653	COMMUTATING CONTACT BOARD, complete, with unreinforced fingers.....
51654	Wood base.....
19693	Contact finger, with spring.....
14429	Contact spring, with rivets, for No. 19693.....
5883	Screw fastening finger to base (8-32, $\frac{5}{16}$ " R.H. Blued), per 100.....
13804	Brass washer plate for No. 5883.....
51651	Single base for contact finger.....
51655	Double base for contact finger.....
14192	Screw fastening base to wood base (No. 8, $\frac{5}{8}$ " F.H.), per 100.....
51652	Screw fastening No. 51653 to frame (14-24, $1\frac{3}{4}$ " R.H.), per 100.....
14426	Washer for No. 51652 ($\frac{1}{8}$ "x $\frac{1}{2}$ "x $\frac{1}{16}$ " thick Brass), per 100.....
51656	CONNECTION BOARD AND MOTOR CUTOUT, complete, with safety stop for controlling cylinder.....
51657	Wood base.....
51658	Fiber space block back of connection board.....
51659	Screw fastening No. 51656 to frame (14-24, $2\frac{1}{8}$ " R.H.), per 100.....
14426	Washer for No. 51659 ($\frac{1}{8}$ "x $\frac{1}{2}$ "x $\frac{1}{16}$ " thick Brass), per 100.....
19648	Binding screw for terminals (14-24, $\frac{5}{8}$ " R.H. Blued Round Point), per 100.....
22213	Check nut for No. 19648 (14-24 Hex. Flat Brass), per 100.....
14638	Outer switch blade.....
14639	Inner switch blade.....
51660	Double switch blade.....
14641	Long switch handle.....
51661	Short switch handle.....
14632	Fulcrum pillar, with pin.....
51663	Switch contact and binding post, complete, "F2," "F1," "E1".....
14629	Switch contact, without binding post, for long switch handle.....
19662	Switch contact, for double switch handle.....
19664	Switch contact, right-hand, for long switch handle.....
19663	Switch contact, right-hand, for short switch handle.....
19665	Binding post, complete.....
51664	Safety stop for controlling cylinder, complete.....
51665	Bent cam lever, with pin.....
51666	Crank for lever, with rivet.....
51667	Stop arm, with pivot pin.....
51668	Pivot pin for No. 51667 ($\frac{3}{8}$ "x $3\frac{1}{4}$ ").....
51669	Link for Nos. 51666, 51667.....
51670	Pin for link ($\frac{5}{16}$ "x1").....
15519	Spring cotter for Nos. 51668, 51670 ($\frac{3}{32}$ "x $\frac{3}{4}$ "), per 1000.....
51675	Fulcrum for No. 51664.....
51676	Bearing bracket for No. 51664.....
13848	Screw fastening switch contacts, fulcrum and bearing bracket to board (No. 10, $\frac{3}{4}$ " F.H.), per 100.....
1013	Screw fastening binding posts to board (No. 8, $\frac{3}{4}$ " F.H.), per 100.....
14647	WIRE GUARD.....
17085	RUBBER GASKET.....
14963	Bracket fastening controller to dasher.....

GENERAL ELECTRIC COMPANY

Parts of BA and BA-2 Controllers 4724A-25

Cat. No.	Description
439	Cap screw fastening bracket to controller ($\frac{1}{2}$ "-13, 1" Hex. H.)
13850	Washer for No. 439 ($\frac{3}{16}$ "x $1\frac{1}{2}$ "x.025"), per 100
17789	Dowel for feet of controller, with nut
16325	Nut for No. 17789 ($\frac{1}{2}$ "-13, Hex. Rough), per 100

PARTS OF B-16 CONTROLLER

.....	B-16 Controller (Series Parallel), complete. (Includes supporting bracket with cap screws and washers for fastening controller to dasher, also wire guard and rubber gasket)
17777	*Operating handle
17778	*Reversing handle

Following are the interchangeable parts of the B-16 controller which differ from those of the B-13:

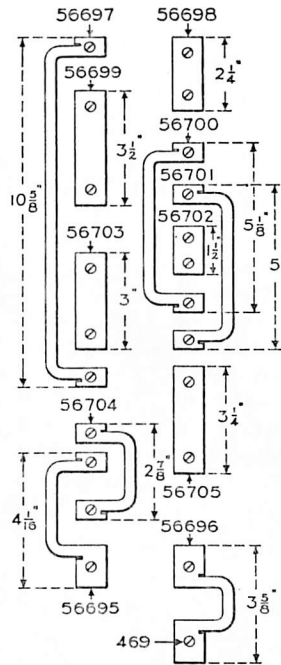
17664	MAGNET SPOOL, wound, complete
51686	COMMUTATING CYLINDER, complete
	Contact segments and screws are listed on page 50.
51687	Wood body
51671	CONTROLLING CONTACT BOARD, complete, with reinforced fingers
14421	Reinforced wide contact finger, with spring
14422	Reinforced narrow contact finger, with spring
5889	Screw fastening wide finger to base (10-24, $\frac{7}{16}$ " R.H. Blued), per 100
14434	Screw fastening narrow finger to base (8-32, $\frac{3}{8}$ " R.H. Blued), per 100
51672	REVERSING CONTACT BOARD, complete, with reinforced fingers
51688	COMMUTATING CONTACT BOARD, complete, with reinforced fingers
51689	Wood base for No. 51688
14415	Reinforced contact finger, with spring
14434	Screw fastening finger to base (8-32, $\frac{3}{8}$ " R.H. Blued), per 100
51690	CONNECTION BOARD AND MOTOR CUTOFF, complete, with safety stop for controlling cylinder
51691	Wood base
14640	Short switch handle
51692	Fulcrum pillar and binding post, with pin
17683	Double switch contact for short switch handle
51693	Double binding post, complete

*Not included in complete controller, must be ordered separately.

GENERAL ELECTRIC COMPANY

4724A-26 Parts of BA and BA-2 Controllers

COMMUTATING CYLINDER SEGMENTS FOR B-16 CONTROLLER



CAT. NO.	LIST PRICE	CAT. NO.	LIST PRICE
56695	56701
56696	56702
56697	56703
56698	56704
56699	56705
56700

Cat. No.	Description
469	Screw for segments, per 100

PARTS OF B-18 CONTROLLER

- B-18 Controller (Series Parallel), complete. (Includes supporting bracket with cap screws and washers for fastening controller to dasher, also wire guard and rubber gasket)
- 17777 *Operating handle.....
- 17778 *Reversing handle.....

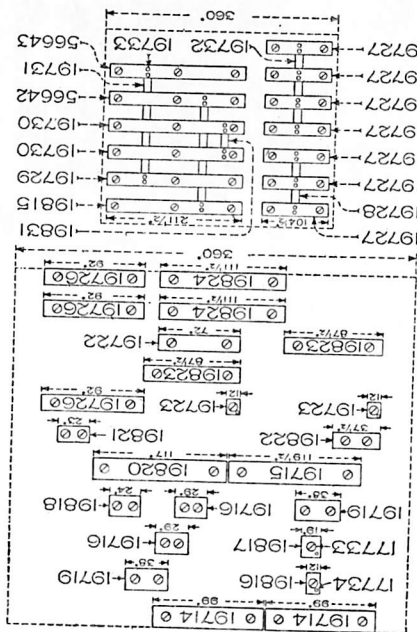
NOTE: The B-18 controller does not include limit switch.

Following are the interchangeable parts of the B-18 controller, which differ from those of the B-3:

- 51583 FRAME fitted with bearing caps for cylinder shafts and cap screws for same.....
- 27634 CONTROLLING CYLINDER, complete, with shaft, insulation disks and star wheel.....
Contact segments and screws are listed on page 51.
- 51584 RIGHT-HAND CONTACT BOARD, complete, with unreinforced fingers.....
- 51585 Wood base.....

*Not included in complete controller, must be ordered separately.

CONTROLLING CYLINDER SEGMENTS FOR B-18 CONTROLLER Parts of BA and B-1-2 Controllers 4724A-27



CAT. NO.	LIST PRICE	CAT. NO.	LIST PRICE	CAT. NO.	LIST PRICE
19714	19815	19727
19715	19816	19728
19716	19817	19729
19719	19818	19730
19722	19820	19731
19723	19821	19732
19726	19843

Cat. No. **Description**

1733	Screw for segments, per 100
1734	Pin for segments, per 100
19733	Rivet for segments, per 100

NOTE: The fiber block Cat. No. 51536 is not used between fingers on the right-hand contact board.

CAT. NO. **DESCRIPTION**

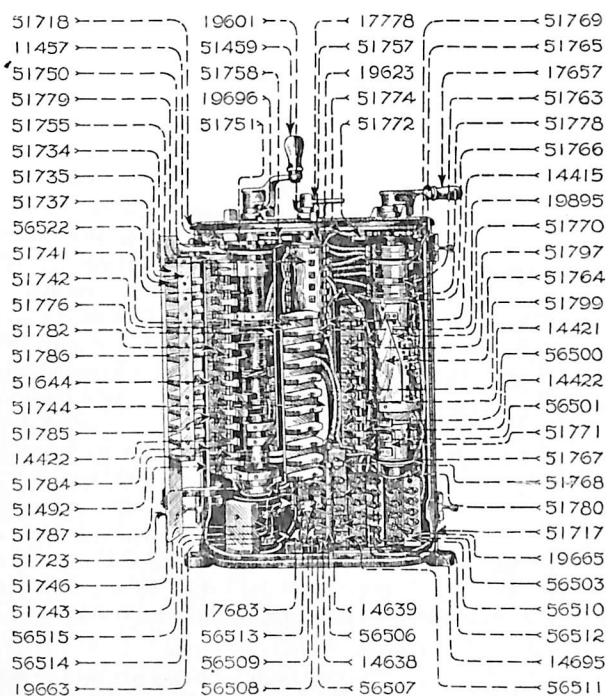
51586	CONNECTION BOARD AND MOTOR CUTOFF, complete, with (No. 6) insulated wires.
51587	Wood base.
51588	Safety latch, with hinge pin.
51589	Fulcrum pillar and binding post, with pin.
51590	Double switch blade.
51591	Long switch handle, with fiber sleeve.
51592	Short switch handle.
51593	Switch contact and binding post, complete, left-hand, for double switch blade.

GENERAL ELECTRIC COMPANY

4724A-28 Parts of BA and BA-2 Controllers

NOTE: Switch contact Cat. No. 19664 for long switch handle for B-3 connection board is omitted on the B-18 board.

PARTS OF B-19 CONTROLLER



Cat. No.	Description
.....	B-19 Controller (Series Parallel), complete. (Includes supporting bracket, with cap screws and washers for fastening controller to dasher, also wire guard and rubber gasket).....
51459	*Operating handle.....
17778	*Reversing handle.....
17657	*Brake handle.....
<i>Following are the interchangeable parts:</i>	
51717	FRAME, complete, includes binding nut for power magnet spool.....
51746	Binding nut, with set screw, for magnet spool (1 3/8"-18 Hex. Sp'l).....
51747	Set screw for No. 51746 (14-24, 7/8" Sp'l).....
51718	Cap for controller.....
51719	Cap screw fastening cap to frame (7/16"-14, 1 5/8" Hex. H.).....
51720	Screw fastening cap to frame (3/8"-16, 1 3/8" F.H.), per 100.....
19696	WATER CAP AND POINTER for controlling and brake cylinder shafts, with set screw.....
19601	WATER CAP for reversing cylinder shaft, with set screw.....
14410	Set screw for water caps (5/16"-18, 3/2" Sp'l Blued), per 100.....
51721	SHEET IRON COVER, complete.....
14645	Slotted lug, with rivets, for cover.....
14646	Hinge bolt, with pin and nut, for cover.....
51722	Fiber plate for base of controller.....
19741	Screw fastening No. 51722 to controller base (14-24, 7/16" F.H.), per 100.....
51723	HINGED POLE PIECE for operating cylinder, complete, with hinge brackets and hinge pins

*Not included in complete controller, must be ordered separately.

GENERAL ELECTRIC COMPANY

Parts of BA and BA-2 Controllers 4724A-29

Cat. No.	Description
51724	Upper hinge bracket, with hinge pin.....
51725	Lower hinge bracket, with hinge pin.....
51726	Screw fastening bracket to pole piece ($\frac{5}{16}$ "-18, $\frac{5}{8}$ " F.H.).....
51727	Hinge pin for brackets ($\frac{7}{16}$ "x $2\frac{1}{2}$ " Sp'l).....
51728	Washer for hinge pin ($\frac{1}{2}$ "x $\frac{7}{8}$ "x.062"), per 100.....
19757	Spring cotter for hinge pin ($\frac{1}{8}$ "x $\frac{7}{8}$ ").....
51729	Cap screw, with wrench attached, fastening No. 51723 to frame ($\frac{1}{2}$ "-13, $1\frac{1}{4}$ " Hex. H. Sp'l).....
51730	HINGED POLE PIECE, for brake cylinder, with hinge pin.....
51731	Hinge pin for pole piece.....
14938	Hinge joint for pole piece.....
887	Cap screw fastening hinge joint to magnet core ($\frac{1}{2}$ "-13, $1\frac{1}{2}$ " Hex. H.).....
51732	Thumbscrew fastening No. 51730 in position ($\frac{1}{2}$ "-13, $1\frac{3}{4}$ " Brass Sp'l).....
51733	ARC DEFLECTOR, complete, for controlling cylinder.....
13846	Screw fastening arc deflector to pole piece (No. 10, $1\frac{1}{8}$ " R.H. Blued), per 100.....
13635	Insulating bushing used with No. 13846.....
51734	Wide strip for arc deflector.....
51735	Narrow strip for arc deflector, right-hand side.....
51736	Narrow strip for arc deflector, left-hand side.....
51737	Division plate for arc deflector.....
51645	Screw fastening division plate in position (No. 9, $\frac{7}{8}$ " F.H.), per 100.....
51738	Top shield for arc deflector.....
51739	Screw fastening No. 51738 to division plate (No. 8, $\frac{3}{8}$ " R.H. Blued), per 100.....
51740	ARC DEFLECTOR, complete, for brake cylinder.....
13846	Screw fastening arc deflector to pole piece (No. 10, $1\frac{1}{8}$ " R.H. Blued), per 100.....
13635	Insulating bushing used with No. 13846.....
51741	Wide strip for arc deflector.....
51742	Narrow strip for arc deflector.....
19895	Division plate for arc deflector.....
51743	MAGNET SPOOL, wound, complete (Power).....
51744	MAGNET SPOOL, wound, complete (Brake).....
51745	Binding screw for Nos. 51743, 51744 (14-24, $\frac{3}{4}$ " R.H. Blued), per 100.....
22213	Check nut for No. 51745 (14-24 Hex. Flat Brass), per 100.....
56522	CONTROLLING CYLINDER, complete, with shaft, insulation disk, star wheel and series stop.....
Contact segments and screws are listed on page 59.	
51748	Shaft.....
51749	Key for cylinder and shaft.....
51750	Insulation disk.....
51751	STAR WHEEL, with pin, must be fitted.....
11457	Check pawl, with roller, for star wheel for controlling cylinder.....
19739	Roller, with pin.....
19615	Pivot for roller ($\frac{3}{16}$ "x $1\frac{3}{32}$ ").....
51752	Pivot for No. 11457.....
51753	REVERSING CYLINDER, complete, with shaft and star wheel.....
51754	Shaft.....
51755	Wood body.....
19623	Fiber disk.....
10377	Screw fastening No. 19623 to wood body (No. 10, 1" F.H. Brass), per 100.....
51756	Brass collar, with pin.....
51757	STAR WHEEL, with pin, must be fitted.....
14692	Short contact.....
14693	Long contact.....
19625	Screw fastening contact to body (No. 8, $\frac{1}{2}$ " R.H. Brass), per 100.....
51758	CHECK PAWL for star wheel, for reversing cylinder.....

GENERAL ELECTRIC COMPANY

4724A-30 Parts of BA and BA-2 Controllers

Cat. No.	Description
51759	Pivot pin for pawl.....
51728	Washer for pivot pin ($\frac{1}{2}$ "x $\frac{7}{8}$ "x.062"), per 100.....
16118	Spring cotter for pivot pin ($\frac{1}{8}$ "x $\frac{3}{4}$ "), per 1000.....
51761	BRAKE CYLINDER, complete, with shaft, insulation disks, collar and star wheel.....
	Contact segments and screws are listed on page 62.
51762	Shaft.....
51763	Wood body (upper).....
51764	Wood body (lower).....
51765	Insulation disk (upper).....
51766	Insulation disk (middle).....
51767	Insulation disk (lower).....
51768	Brass collar, with pin.....
51769	STAR WHEEL, with pin, must be fitted.....
51770	Upper casting for contact segments.....
51771	Lower casting for contact segments.....
469	Screw fastening Nos. 51770, 51771, to wood body (No. 10, $\frac{7}{8}$ " F.H. Brass), per 100.....
51772	Check pawl, with roller, for star wheel for brake cylinder.....
19739	Roller, with pin.....
19615	Pin for roller ($\frac{5}{16}$ " x $1\frac{1}{2}$ ").....
51773	Pivot pin for No. 51772.....
51728	Washer for pivot pin ($\frac{1}{2}$ "x $\frac{7}{8}$ "x.062"), per 100.....
16118	Spring cotter for pivot pin ($\frac{1}{8}$ "x $\frac{3}{4}$ "), per 1000.....
51774	Interlocking arm, with pin, for No. 51772.....
19615	Pin for No. 51774 ($\frac{5}{16}$ "x $1\frac{1}{2}$ ").....
13632	Spring for cylinder pawls (26 turns .091" Steel Wire).....
51775	Threaded post for No. 13632 ($\frac{3}{8}$ "-16).....
51776	Fiber partition, with brackets and support between controlling and reversing cylinders.....
51777	Screw fastening bracket for partition to frame and partition to support (14-24, $\frac{3}{8}$ " R.H.), per 100.....
9803	Washer for No. 51777 ($\frac{1}{4}$ "x $\frac{9}{16}$ "x.035" copper), per 100.....
51778	Fiber shield between reversing cylinder and brake contact board.....
51400	Screw fastening No. 51778 to brake contact board (No. 10, $\frac{7}{8}$ " R.H. Blued), per 100.....
51779	Fiber shield for upper end of controlling cylinder.....
9712	Screw fastening No. 51779 to controlling contact board (No. 10, $1\frac{1}{4}$ " F.H.), per 100.....
51780	Fiber shield for lower end of brake cylinder.....
19645	Screw fastening No. 51780 to connection board (No. 8, $\frac{1}{2}$ " R.H.), per 100.....
51781	CONTROLLING CONTACT BOARD, complete, with reinforced fingers.....
51782	Wood base.....
51788	Insulation strip under No. 51782.....
51646	Screw fastening wood base to frame ($\frac{5}{16}$ "-18, $2\frac{1}{8}$ " R.H.), per 100.....
51647	Washer for No. 51646 ($\frac{1}{2}$ "x $\frac{5}{8}$ "x.062"), per 100.....
14422	Wide contact finger, with spring.....
51492	Narrow contact finger, with spring.....
19767	Contact spring, with rivets, for No. 14422, per 100.....
51523	Contact spring, with rivets, for No. 51492.....
14434	Screw fastening fingers to base (8-32, $\frac{3}{8}$ " R.H. Blued), per 100.....
19684	Brass washer plate for No. 14422, per 100.....
51783	Brass washer plate for No. 51492, per 100.....
19685	Adjusting screw for contact fingers (14-24, $\frac{7}{8}$ " R.H. Blued), per 100.....
22213	Check nut for adjusting screw (14-24 Hex. Flat Brass), per 100.....
51644	Wide contact base.....
51784	Narrow contact base.....
13852	Screw fastening base to wood base (No. 10, $\frac{7}{8}$ " F.H.), per 100.....
51785	Fiber block between fingers.....
51786	Finger shield, with asbestos shield, for controlling cylinder.....
51787	Fiber shield for back of board.....

GENERAL ELECTRIC COMPANY

Parts of BA and BA-2 Controllers 4724A-31

Cat. No.	Description
13846	Screw fastening No. 51785, 51786, 51787 to wood base (No. 10, 1 1/8" R.H. Blued), per 100.
13371	Washer for No. 13846 (3/16" x 1/16" x .040" Copper)
51789	REVERSING CONTACT BOARD, complete, with reinforced fingers
51790	Wood base
51791	Screw fastening wood base to frame (5/16"-18, 1 7/8" R.H.), per 100
51647	Washer for No. 51791 (1/2" x 5/8" x .062"), per 100
14415	Contact finger, with spring
14429	Contact spring, with rivets, for No. 14415
14434	Screw fastening finger to base (8-32, 3/8" R.H. Blued), per 100
13804	Brass washer plate for No. 14434
19697	Base for contact finger
14192	Screw fastening base to wood base (No. 8, 5/8" F.H.), per 100
51792	BRAKE CONTACT BOARD (upper), complete, with reinforced fingers
51793	BRAKE CONTACT BOARD (lower), right-hand, complete, with reinforced fingers
51794	BRAKE CONTACT BOARD (lower), left-hand, complete, with reinforced fingers
51795	Wood base for No. 51792
51796	Wood base for No. 51793
51797	Wood base for No. 51794
51791	Screw fastening Nos. 51795, 51796, 51797, to frame (5/16"-18, 1 7/8" R.H.), per 100
51647	Washer for No. 51791 (1/2" x 5/8" x .052" thick), per 100
14415	Contact finger, with spring, for Nos. 51792, 51793
14421	Wide contact finger, with spring, for No. 51794
14422	Narrow contact finger, with spring, for No. 51794
14429	Contact spring, with rivets, for No. 14415
14427	Contact spring, with rivets, for No. 14421
19767	Contact spring, with rivets, for No. 14422, per 100
14434	Screw fastening contact fingers to base (8-32, 3/8" R.H. Blued), per 100
13804	Brass washer plate for screw fastening No. 14415 to base

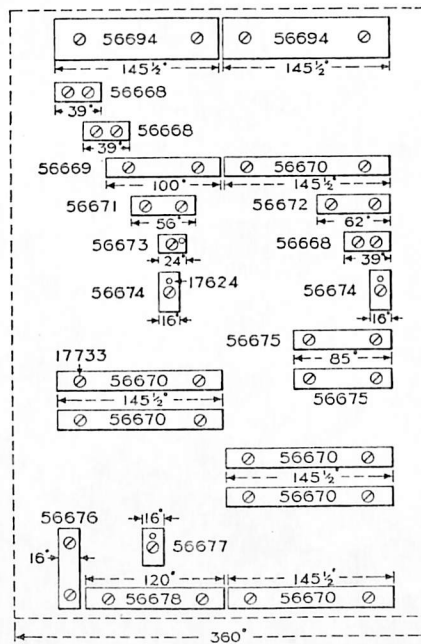
CONTROLLING CYLINDER SEGMENTS FOR B-19 CONTROLLER

17733	Screw for segments, per 100
17624	Pin for segments, per 100
19683	Brass washer plate for screw fastening No. 14421 to base, per 100
19684	Brass washer plate for screw fastening No. 14422 to base, per 100
19685	Adjusting screw for Nos. 14421, 14422 (14-24, 7/8" R.H. Blued), per 100
22213	Check nut for adjusting screw (14-24, Hex. Flat Brass), per 100
19697	Single contact base for No. 14415
51798	Double contact base for No. 14415
51799	Contact base for No. 14421
56500	Contact base for No. 14422
14192	Screw fastening contact bases to wood base (No. 8, 5/8" F.H.), per 100
56501	Finger shield for lower left-hand contact board
13846	Screw fastening shield to board (No. 10, 1 1/8" R.H. Blued), per 100
56502	CONNECTION BOARD AND MOTOR CUTOUT, complete
56503	Wood base
56504	Screw fastening wood base to frame (14-24, 2 5/16" R.H.)
14426	Washer for screw (17/64" x 1/2" x .062" Brass), per 100
56505	Bushing used in connection with No. 14426 (3/32" x 3/4" x 1 1/16" long, Fiber)
56506	Switch handle
14638	Outer switch blade
14639	Inner switch blade
56507	Single fulcrum base for two-wire connection
56508	Single fulcrum base for one-wire connection
56509	Double fulcrum base
56510	Switch contact, upper right-hand, with 1/4" hole drilled for connection wire

GENERAL ELECTRIC COMPANY

4724A-32 Parts of BA and BA-2 Controllers

Cat. No.	Description
56511	Switch contact, lower, right-hand, with $\frac{5}{16}$ " hole for connection wire.....
56512	Switch contact, middle, right-hand, with $\frac{1}{4}$ " hole for connection wire.....
14695	Switch contact and binding post, right-hand.....
19663	Switch contact, upper, left-hand.....
17683	Double switch contact, lower, left-hand.....
19665	Binding post, complete.....
51492	Contact finger, with spring.....
51523	Contact spring, with rivets, for No. 51492.....
14434	Screw fastening finger to base (8-32, $\frac{3}{8}$ " R.H. Blued), per 100.....



CAT. NO.	LIST PRICE	CAT. NO.	LIST PRICE
56668	56674
56669	56675
56670	56676
56671	56677
56672	56678
56673	56694

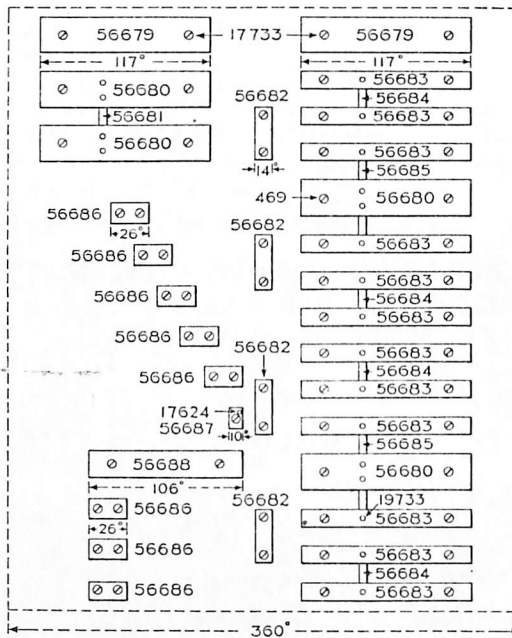
51783	Brass washer plate for No. 14434, per 100.....
19685	Adjusting screw for contact finger (14-24, $\frac{7}{8}$ " R.H. Blued), per 100.....
22213	Check-nut for adjusting screw (14-24, Hex. Flat Brass), per 100.....
51784	Contact base.....
56513	Bent cam lever, for series stop, complete, includes crank, shoe, trigger and hinge pin.....
56514	Hinge bracket for No. 56513.....
13848	Screw fastening switch contacts, fulcrum pillars, finger bases and hinge bracket to board (No. 10, $\frac{3}{4}$ " F.H.), per 100.....
1013	Screw fastening binding post to board (No. 8, $\frac{3}{4}$ " F.H.). per 100.....

GENERAL ELECTRIC COMPANY

Parts of BA and BA-2 Controllers 4724A-33

Cat. No.	Description
56515	Pawl for series stop.....
56516	Spring for pawl (13 turns .058" Steel wire).....
56517	Pin for pawl.....
10365	Washer for pin ($\frac{7}{16}$ "x $\frac{7}{8}$ "x.125"), per 100.....
16118	Spring cotter for pin ($\frac{1}{8}$ "x $\frac{3}{4}$ "), per 1000.....
14647	WIRE GUARD.....
17085	RUBBER GASKET.....
14963	Bracket fastening controller to dasher.....
439	Cap screw fastening bracket to controller ($\frac{1}{2}$ "-13, 1" Hex. H).....
13850	Washer for No. 439 ($\frac{9}{16}$ "x1 $\frac{1}{2}$ "x.025"), per 100.....
17789	Dowel with nut, for feet of controller.....
16325	Nut for 17789 ($\frac{1}{2}$ "-13 Hex. Rough), per 100.....

BRAKE CYLINDER SEGMENTS FOR B-19 CONTROLLER



CAT. NO.	LIST PRICE	CAT. NO.	LIST PRICE	CAT. NO.	LIST PRICE	CAT. NO.	LIST PRICE
56679	56682	56685	56888
56680	56683	56686
56681	56684	56687

17733	14-24, $\frac{1}{2}$ " F.H. Blued Screw Sp'l. per 100.....
17624	Pin for segments, per 100.....
19733	Rivet for segments, per 100.....
469	No. 10, $\frac{7}{8}$ " F.H. Brass Screw, per 100.....

PARTS OF B-23 CONTROLLER

.....	B-23 Controller (Series Parallel), complete. (Includes supporting bracket, with cap screws and washers for fastening controller to dasher, also wire guard and rubber gasket).....
-------	--

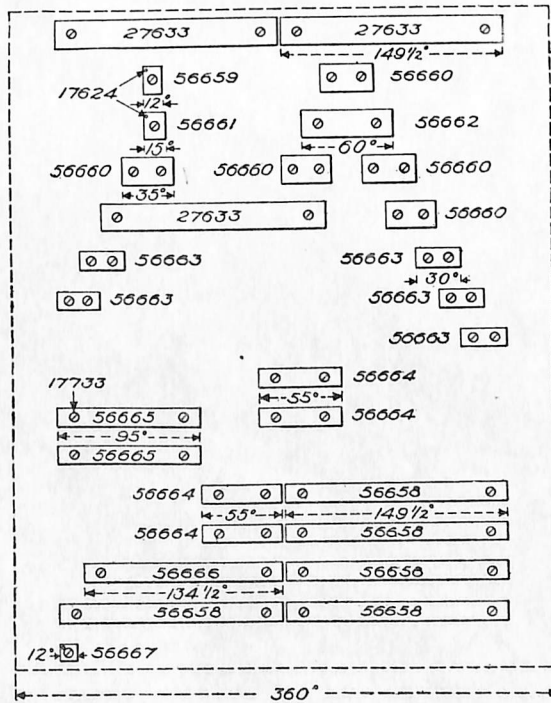
GENERAL ELECTRIC COMPANY

4724A-34 Parts of BA and BA-2 Controllers

Cat. No.	Description
17777	*Operating handle.....
17778	*Reversing handle.....
<i>The following are the interchangeable parts of the B-23 controller which differ from those of the B-13:</i>	
17664	Magnet spool, wound, complete.....
51671	CONTROLLING CONTACT BOARD, complete, with reinforced fingers.....
14421	Reinforced wide contact finger, with spring.....
14422	Reinforced narrow contact finger, with spring.....
5889	Screw fastening wide finger to base (10-24, $\frac{7}{16}$ " R.H. Blued), per 100.....
14434	Screw fastening narrow finger to base (8-32, $\frac{3}{8}$ " R.H. Blued), per 100.....
51672	REVERSING CONTACT BOARD, complete, with reinforced fingers.....
51673	Commutating contact board, with reinforced fingers.....
14415	Reinforced contact finger, with spring.....
14434	Screw fastening finger to base (8-32, $\frac{3}{8}$ " R.H. Blued), per 100.....
51674	CONNECTION BOARD AND MOTOR CUTOUT, complete, with (No. 4) insulated wires... This differs from complete board Cat. No. 51656 for B-13 controller in that it is wired with No. 4 instead of No. 6 wires.

*Not included in complete controller, must be ordered separately.

CONTROLLING CYLINDER SEGMENTS FOR B-13, B-16, B-23
AND B-24 CONTROLLERS



CAT. NO.	LIST PRICE	CAT. NO.	LIST PRICE
27633	56663
56658	56664
56659	56665
56660	56666
56661	56667
56662